

Zoo Scene Investigators

Marleigh
Norton, MIT

with the
Columbus Zoo
and Aquarium



Massachusetts Institute of Technology

Marleigh Norton, 2008

Page 1

Pilot Study: Jr. High Field Trip



+ =



The premise



The technology



Stylus

Handheld
Computer

GPS
Receiver



Map user interface

- Map
- Locations to investigate
- Player



A clue!



Mapping Content to the Game



Game & Location





Massachusetts Institute of Technology

Marleigh Norton, 2000

Page 9



Massachusetts Institute of Technology

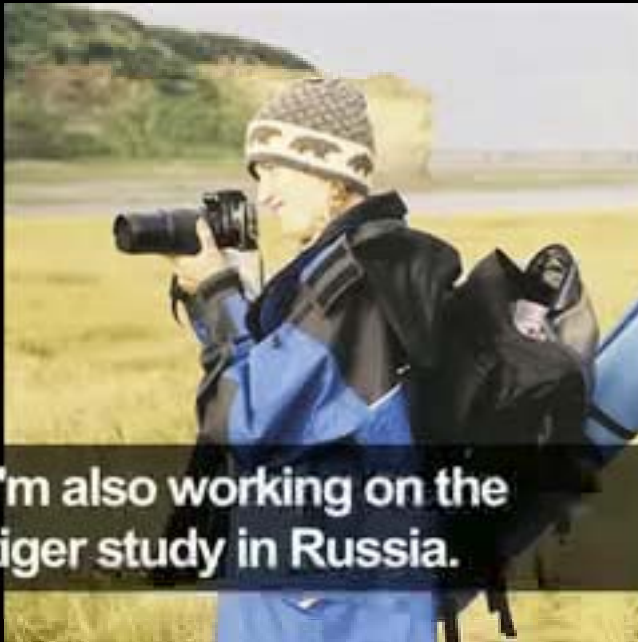
March 11, 2000

The Mechanics of Learning

Race to the end vs. Reflection and understanding



Peer Pressure



I'm also working on the tiger study in Russia.

**The Police Officers
found something.**

**Ask them
what they found.**



Peer Pressure



Clue Reports & Wrap-up



Evaluation

Don't guess. Get data.



ZSI Evaluation Plan

- 3 weeks of focus groups
- 2 on site handheld prototype playtests
 - 1 playtest = 3 sessions, 3 groups playing simultaneously per session
 - Revise prototype between playtests

Observation and surveys



Remember this?



**The Police Officers
found something.**

**Ask them
what they found.**



<http://education.mit.edu/drupal/ar>

Thank you!



Massachusetts Institute of Technology

Marleigh Norton, 2008

Page 20